

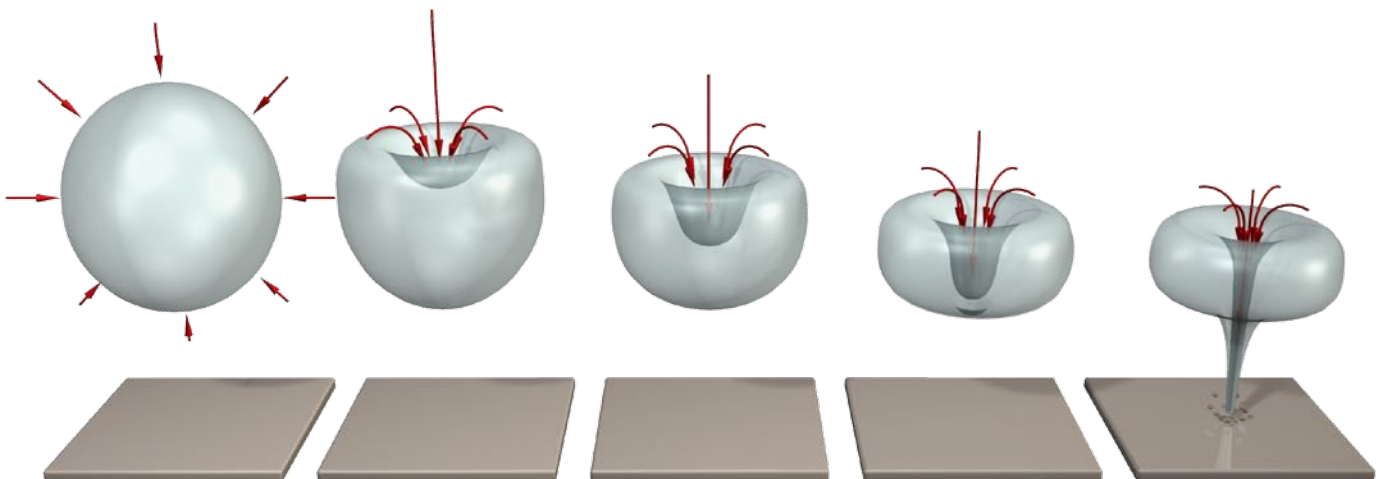
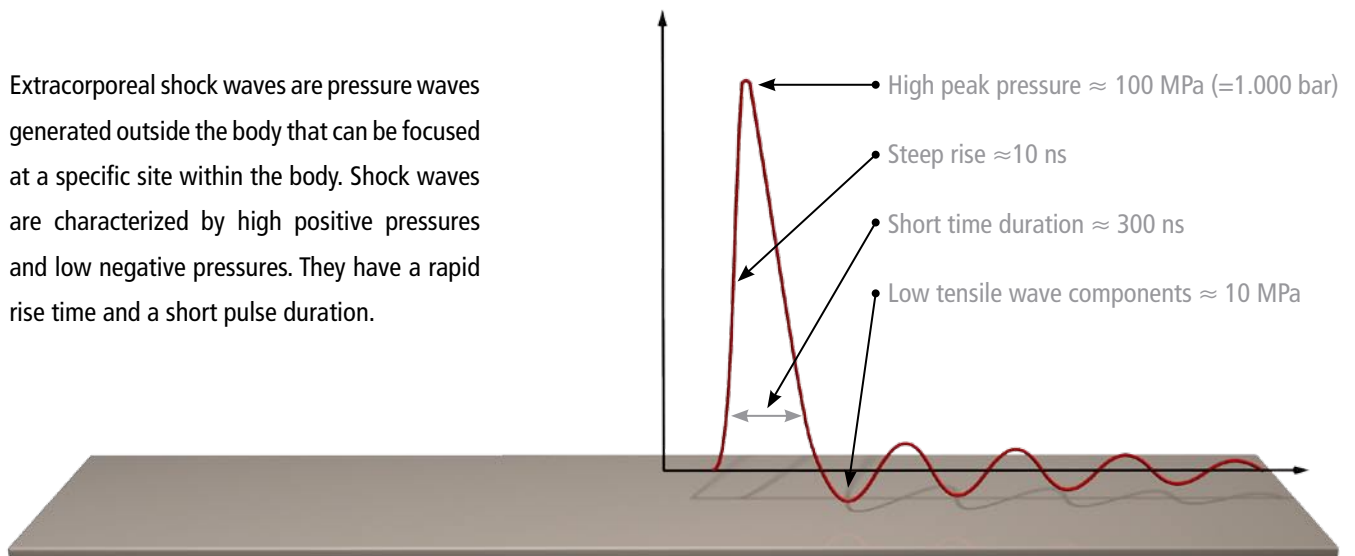
DUOLITH® VET – The **FIRST**
combined shock wave therapy system
in veterinary medicine



ESWT
unlimited

DUOLITH® VET – Physical characteristic

Extracorporeal shock waves are pressure waves generated outside the body that can be focused at a specific site within the body. Shock waves are characterized by high positive pressures and low negative pressures. They have a rapid rise time and a short pulse duration.



As a result of the rapid interaction between pressure and shear loads, cavitation occurs. The collapse of the gas bubbles leads to the development of fast flows or jet streams that contribute to the effect on the tissue.

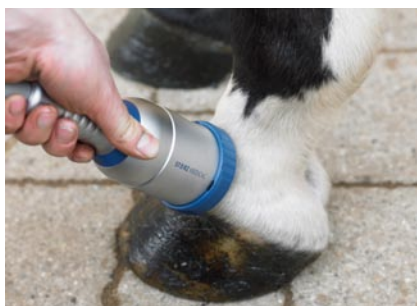
ESWT-Indications

- ▶ Insertional desmopathies
- ▶ Tendinopathies with and without calcification
- ▶ Fractures and stress fractures
- ▶ Osteoarthritis
- ▶ Osteochondrosis lesions (OCD)
- ▶ Sore back problems
- ▶ Myopathy
- ▶ Metaplasia
- ▶ Bursitis
- ▶ Acupuncture

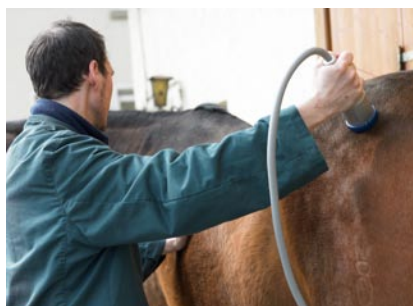


COMPACT and MOBILE: Solid transportation case for a safe journey. In practise or at the stable your shock wave partner.

DUOLITH® VET – fast, strong, enduring



Ringbone: FSW, delay line I,
EFD: 0,25 - 0,35 mj/mm²,
1,500 - 2,000 shocks



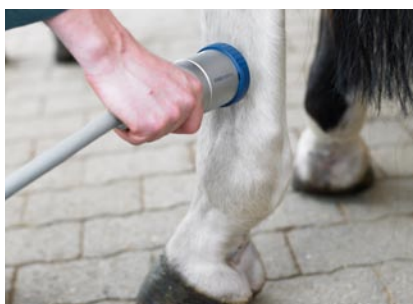
Metaplasia: FSW, delay line 0/I,
EFD: 0,15 - 0,25 mj/mm²,
1,500 shocks



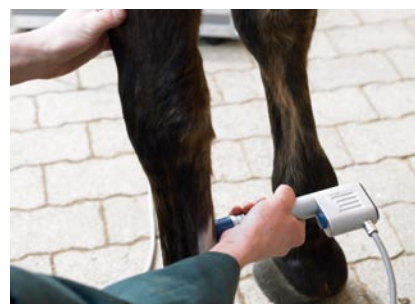
Sesamoiditis: FSW, delay line II,
EFD: 0,1 - 0,25 mj/mm²,
1,000 - 2,000 shocks



Cannon bone: FSW, delay line II,
EFD: 0,35 mj/mm²,
1,500 shocks



Splint bone: FSW (RSW), delay line II,
EFD: 0,25 - 0,35 mj/mm²,
1,500 - 2,000 shocks

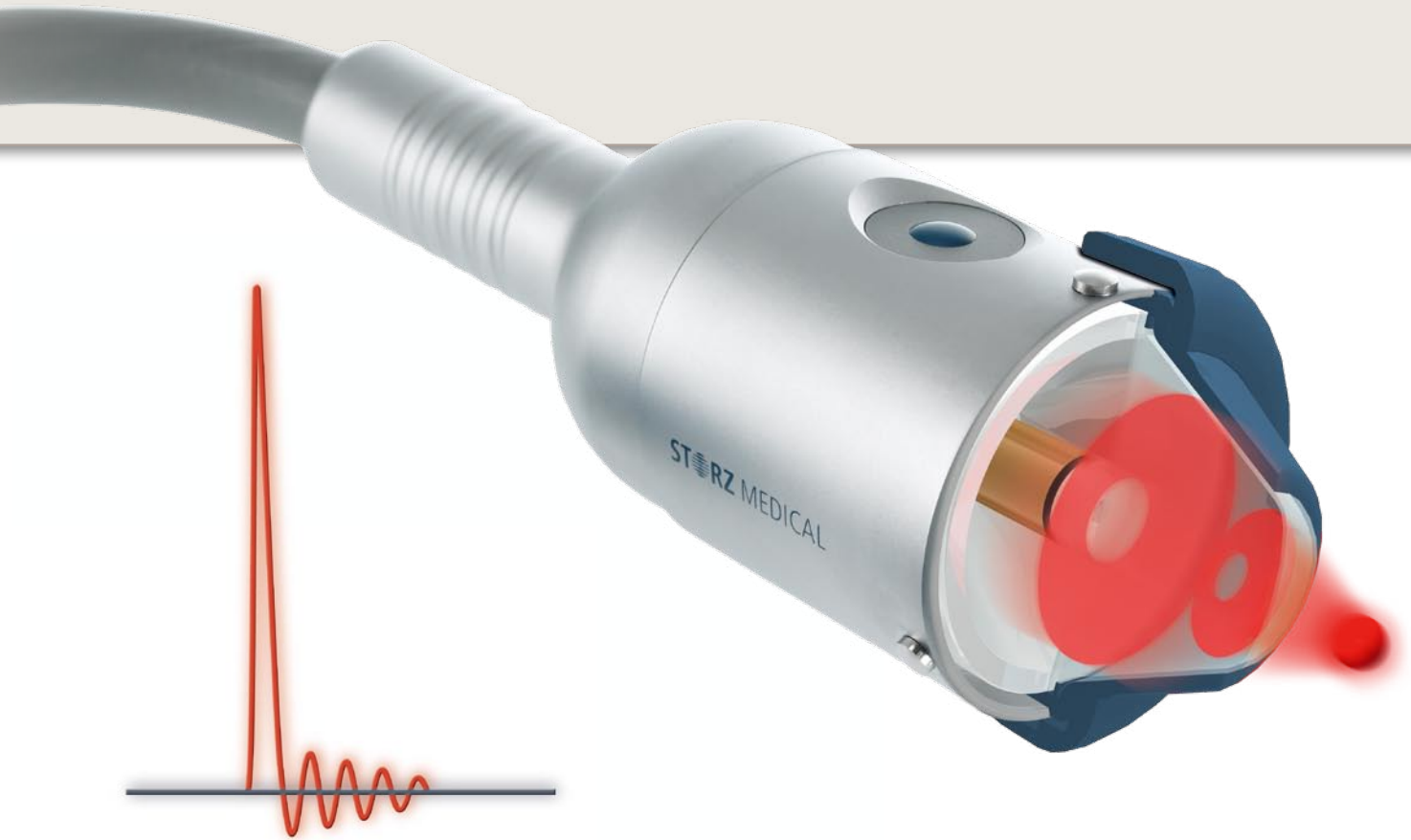


Metacarpal: RSW, 15 mm applicator,
3 - 3,5 bar,
2,500 - 3,000 shocks



Navicular disease: FSW, delay line 0,
EFD: 0,35 - 0,45 mj/mm²,
1,000 shocks palmar +
1,000 shocks through frog

»The very best shock wave«



ESWT – focused shock wave therapy

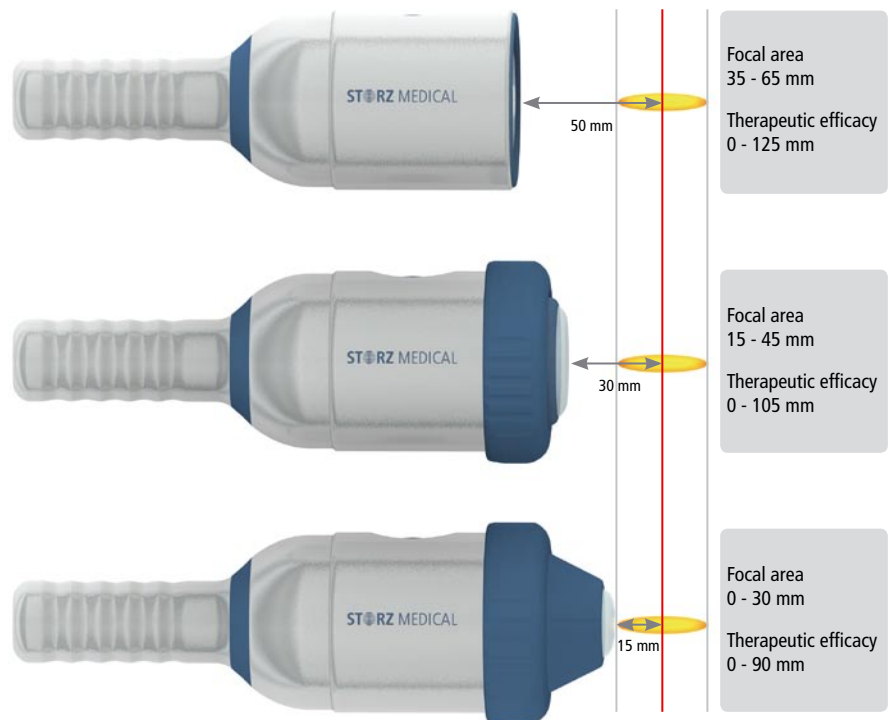
RSWT – radial shock wave therapy



DUOLITH® VET – maximum performance

Focus penetration depth

The patented STORZ MEDICAL electromagnetic cylindrical coil guarantees a uniform energy discharge, long lifecycle and easy handling. Increased targeting precision is achieved due to the large focal area. A wide energy range, precisely adjustable allows a professional and reliable treatment.



Two stand offs for all penetration depths. Simple applicator replacement or easy to reinstall retrofit options. Save treatment protocols by easy touch screen. Copy files and keep updated through LAN port.





ESWT – focused shock wave therapy

- ▶ Dynamic energy range low-high
0.01-0.55 mJ/sq.mm (max. 62 MPa)
 - ▶ Selectable therapeutic penetration depth 0-65 mm
 - ▶ High shock frequency 1-8 Hz
 - ▶ Total energy measurement
- = all due to unique STORZ MEDICAL cylindrical source



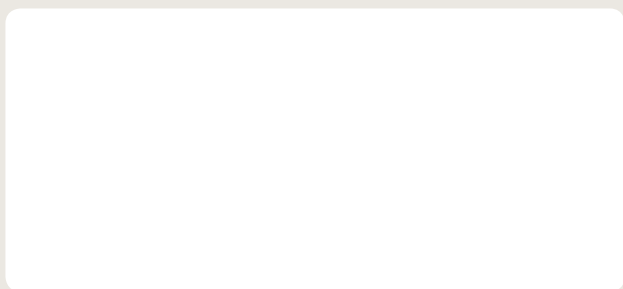
... and easily switchable

RSWT – radial shock wave therapy

- ▶ Selectable »Radial Power Application«
 - ▶ Minimal applicator excursion (0.1 mm)
for excellent efficacy in tissue
 - ▶ Large coupling area without energy loss
 - ▶ Precision components designed for long lifecycles
- = all due to proven STORZ MEDICAL ballistics



STORZ MEDICAL DEVELOPMENT – POWERFUL TECHNOLOGY



STORZ MEDICAL

STORZ MEDICAL AG · LOHSTAMPFESTRASSE 8 · CH-8274 TÄGERWILEN
TEL. +41 (0)71 677 45 45 · TELEFAX +41 (0)71 677 45 05
E-MAIL MAIL@STORZMEDICAL.COM · WWW.STORZMEDICAL.COM